



Sailing Instructions

NSSC Doublehanded Fall Championship Regatta
Saturday September 24th and Sunday September 25th, 2016

Rules & Management: The races shall be under the management of the Race Committee which shall have final authority to establish the racing conditions. **Except as modified by these sailing instructions, the race shall be governed by the Racing Rules of Sailing 2013-2016, the prescriptions of the USSA and DSA class rules.** Class rules, where applicable, determined in advance and made available shall also apply. The DSA class rules are available at northstarsail.org.

1. **Changes in Sailing Instructions:** Any changes in the race instructions will be published on the NSSC web site at least four hours before the first signal and posted on the NSSC Bulletin Board by 800hrs on Saturday.
2. **Entry:** This race is open to PHRF yachts with valid PHRF certificates. If a yacht does not have a PHRF certificate, the race committee will assign a rating. This rating is not subject to protest. All yachts must be thoroughly seaworthy and ready for sea.
3. **Required Equipment:** Every entrant is required to carry all U.S. Coast Guard required equipment.
4. **Personal Flotation Devices:** Skipper and crew **must** wear a USCG approved life vest with whistle attached from the time a yacht starts the race until the yacht finishes or retires.
5. **Assumption of Risk:** In consideration of being permitted to enter this regatta and being fully knowledgeable of the risks of sailing as a competitive sport, all contestants and crew voluntarily assume all risks associated with participating in the event. It shall be the sole and inescapable responsibility of the skipper and crew of the yacht to decide whether or not to start, to continue or finish a race. The skipper must assure that all safety equipment is properly maintained and stowed and that the crew knows where it is kept and how to use it.
6. **Autopilots:** The use of self-steering devices is permitted.
7. **Classes:**
 - a. **PHRF:** Spinnakers allowed.
 - b. **PHRF (JAM):** No spinnakers, oversize whisker poles, staysails, or double head rigs may be used except as provided by the class rules.
8. **Class Flags, Splits and Notices:** will be posted at NSSC by 0800 on the morning of the 1st race and can also be obtained from the RC boat. Splits may also be posted on NSSC web site, northstarsail.org.
9. **Sail Numbers:** Time will not be taken if yacht mainsail, overlapping jib and spinnaker do not bear the proper number or bear the same number as another yacht in its class, unless the Race Committee is notified prior to the start of the race.
10. **Scoring:** Low point in each class.
11. **Awards:** Results and awards will be presented at North Star Sail Club after dinner, on Sunday, at approximately 1730 hours. Flags will be awarded for the first three finishers in each class. Results will be posted on northstarsail.org within a few days.
12. **Radio Monitoring:** All yachts are required to monitor VHF channel 72 during the race.
13. **Abandonment of Racing:** Yachts dropping out shall report as soon as possible to the race committee on channel 72. It is the responsibility of each individual skipper to assess known conditions, boat and crew in the determination to abandon or continue race.
14. **Shipping Channel:** No boat shall in any way hinder commercial shipping during this event. Any yacht hindering commercial shipping will be disqualified. If commercial shipping is forced to issue a warning



Sailing Instructions

NSSC Doublehanded Fall Championship Regatta
Saturday September 24th and Sunday September 25th, 2016

signal (5 or more short blasts) that is evidence that you have hindered commercial shipping and should abandon the race.

15. **Time Limit:**

- a. **Saturday:** four hours for each class.
- b. **Sunday:** three hours for each class.
- c. One yacht finishing within the time limit constitutes a race for its class and extends the time limit for its class.

16. **Start/Finish Line:**

- a. **Saturday:** Between Buoy 1PH and an orange flag on the committee boat.
- b. **Sunday:** Between buoy CR and an orange flag on the committee boat.

17. **Protection Mark:** One or more limit marks may be set near the start-finish line RC boat. If a yacht touches any limit mark, the starting-finish line RC boat, or passes between them, she shall have touched a mark. As per Rule 44.1, she shall exonerate herself by sailing well clear of all other yachts as soon as possible and remain clear doing a 360° turn, including one tack and one jibe.

18. **Restricted Area:** All yachts must keep clear of the starting line area and the first leg of the course until after the warning signal for their class.

19. **Postponement or Cancellation:** Signals will be displayed from Committee Boat and accompanied by two guns or sound signals as follows:

- a. **“AP” Code Answering Pennant** (vertical red and white stripes, 2 sound signals): All races not started are postponed. This signal will be lowered one minute before next signal is made, which may be code flag “N” or warning signal, is made.
- b. **“N” Code flag** (checkered blue and white, 3 sound signals): All races, including those in progress are abandoned, return to starting area.
- c. **“N” over “H” Code flag** (vertical half red and white): All races are cancelled, return to shore.
- d. **RECALL:** As per rule 29.1, visual recall signal is a white flag with blue cross (code flag “X”), accompanied by a sound signal. Sail number(s) may be broadcast on VHF channel 72.

20. **Starting Sequence:** As per USSA RRS 2013-2016 Rule 26.

21. **First Signal:**

- a. Saturday: 0955 hours
- b. Sunday: 0955 hours (the second race will start soon after the last finish of the first race)



Sailing Instructions

NSSC Doublehanded Fall Championship Regatta
 Saturday September 24th and Sunday September 25th, 2016

22. Race Course (see diagrams that follow, all compass headings are Magnetic):

- a. **Saturday** (leave all marks to port), approximately 10.5nm

Leg 1: Start to St. Clair Light (190°)

Leg 2: St. Clair Light to Finish (10°)

- b. **Sunday** – three possible courses:

Course (length):	Green (5.1nm)	Red (5.1nm)	C (6.1nm)
Shape:	Green	Red	White w/ Black "C"
Leave Marks To:	Starboard	Port	Port
Leg 1:	328° to A	029° to B	356° to C
Leg 2:	086° to B	266° to A	176° to Finish
Leg 3:	209° to Finish	148° to Finish	

ABYRA Approximate Mark Locations:

CR	42° 35.63' N	82° 44.72' W
A	42° 36.99' N	82° 46.15' W
B	42° 37.22' N	82° 43.82' W
C	42° 38.57' N	82° 45.25' W

23. **Shortened Course:** The course may be shortened at any turning mark. Finish between RC boat bearing code flag "S", (white flag with blue square) and nearby mark.
24. **Alternate Penalty:** The Two-Turns or One-Turn Penalty as described in RRS Rule 44.1 shall apply.
25. **Protests:** A yacht that wishes to protest another yacht shall:
- Comply with provisions of RRS Rule 61.1
 - Inform the protested yacht at the first reasonable opportunity and after finishing, promptly inform the Race Committee on station at the finish.
 - Submit written protest to the Race Committee immediately after the last race Sunday. All protests shall be heard by NSSC protest committee immediately following the last race Sunday.



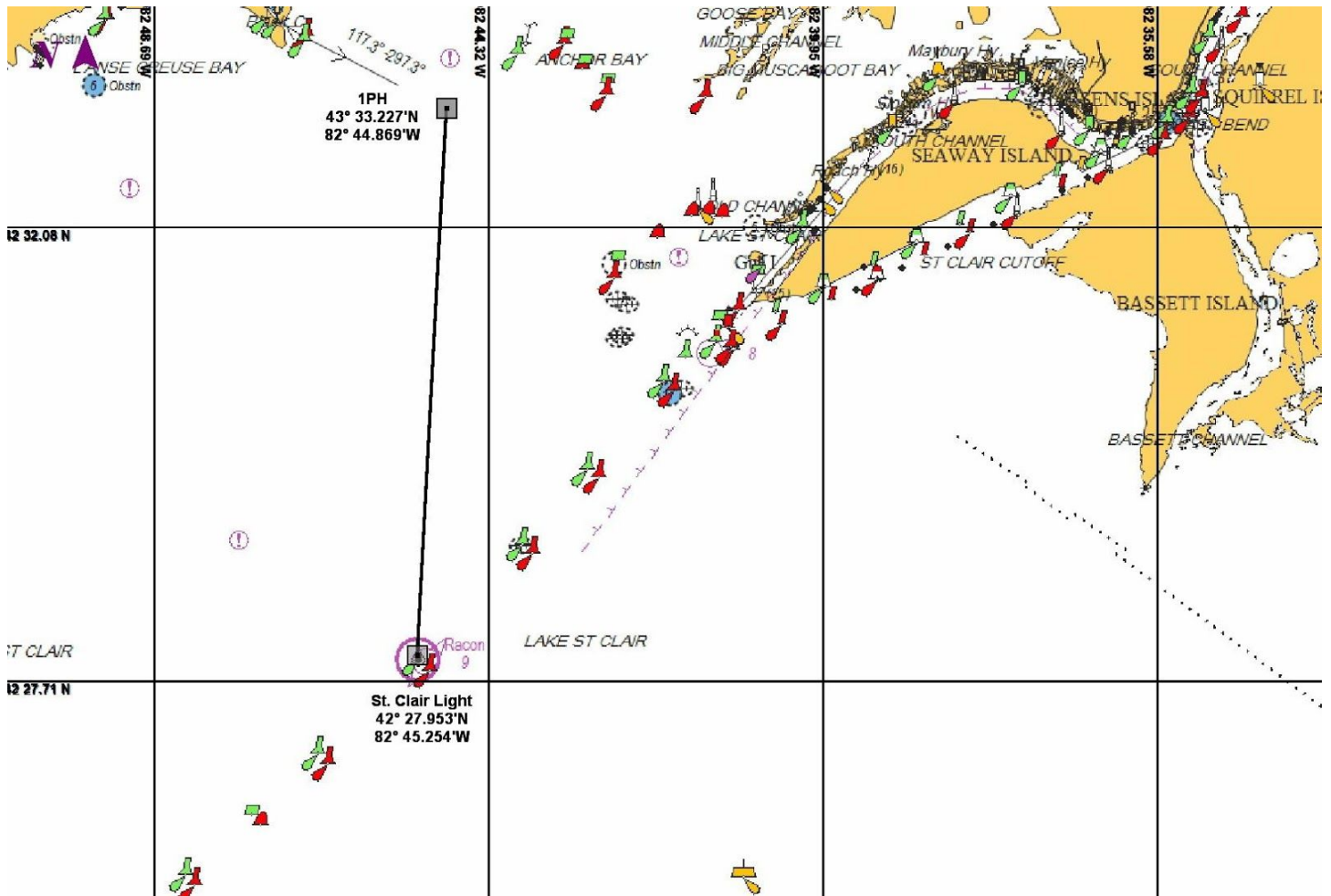
Sailing Instructions

NSSC Doublehanded Fall Championship Regatta

Saturday September 24th and Sunday September 25th, 2016

26. Race Course Diagrams:

Friday Race Course





Sailing Instructions

NSSC Doublehanded Fall Championship Regatta
Saturday September 24th and Sunday September 25th, 2016

Saturday Race Courses

